

# KEAN STAGE



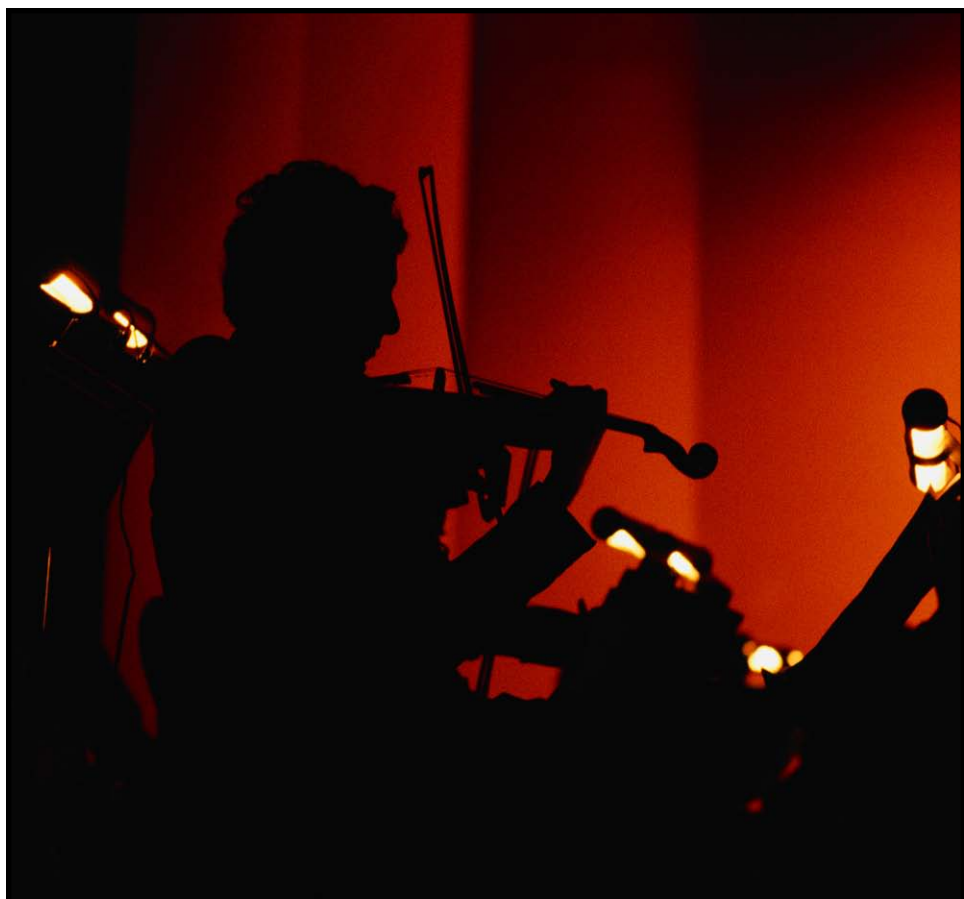
## *The Zufall Ensemble*

July 26, 2009

7 p.m.

Kean Hall, Kean University

# KEAN STAGE



## *The Zufall Ensemble*

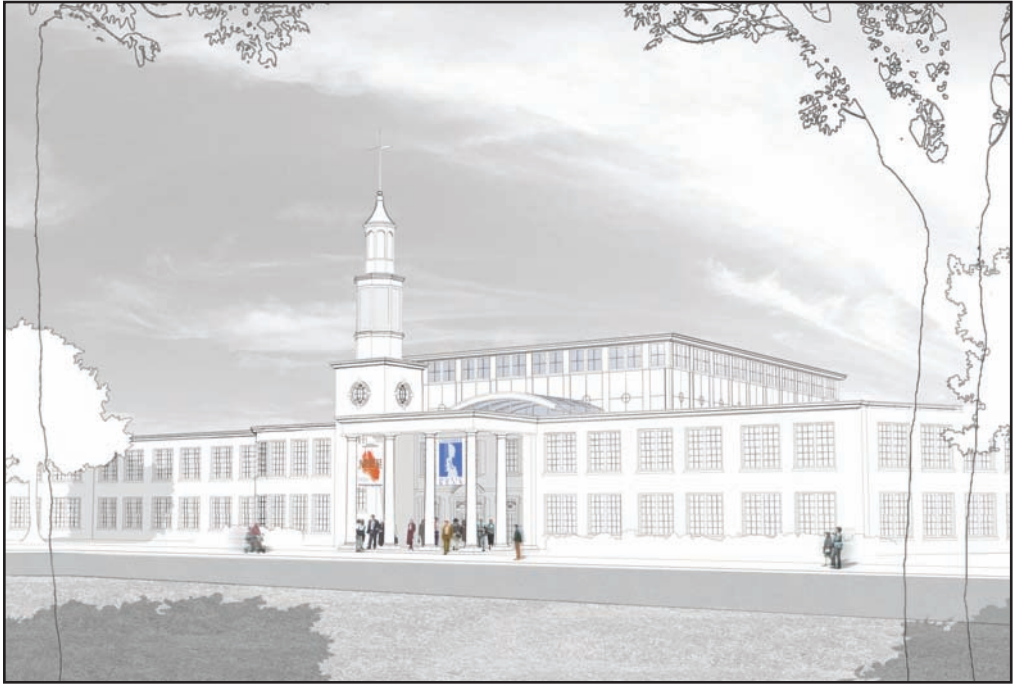
July 26, 2009

7 p.m.

Kean Hall, Kean University

# *Gene and Shelley Enlow Recital Hall*

at Kean University East Campus



*K*ean University will open the Gene and Shelley Enlow Recital Hall on our East Campus next season. This new state-of-the-art facility designed for acoustic music and equipped with the only Fazioli 10' grand piano in the area, plays an integral part in realizing President Dawood Farahi's vision of making Kean University an artistic and cultural center for the region.



---

---

*The Fifth Annual American String Teacher's Association  
of New Jersey Chamber Music Institute  
at Kean University*

*Presents*

**The Zufall Ensemble**

Amy Hamilton Soto, *violin*

Margaret Zufall Roberts, *viola*

Erika Boras Tesi, *cello*

Allison Franzetti, *piano*

---

**Program**

---

*Quartet No. 1 in G Minor, K. 478 . . . . . Wolfgang Amadeus Mozart*  
*Allegro* (1756 -1791)  
*Andante*  
*Rondo - Allegro*

*Quartet in C Minor, Op. 60 . . . . . Johannes Brahms*  
*Allegro non troppo* (1833 - 1897)  
*Scherzo*  
*Andante*  
*Finale - Allegro comodo*

---

---

# The Concert Artist Program

The Concert Artist Program of Kean University is entering its second decade. The program attract world-renowned performing musicians onto the faculty of its vital and growing Music Department. While maintaining successful careers as professional performers, Concert Artists perform solo, chamber music, and jazz recitals at Kean, teach private, weekly studio lessons to Kean students, and conduct masterclasses and other community outreach services in the public schools and junior colleges. Some Concert Artists also coach ensembles and teach classroom courses related to their specialties.

Anthony Scelba first proposed the program in 1998 (then called the “Affiliate Artist Program”) as part of an overall plan for advancement of the Music Department. Since then the Program has expanded from three to 20 Concert Artists. Musicians are chosen for the program after a regional search. Eminent artists with reputations for excellence and thriving careers, eager to devote themselves to Kean as performers and teachers, and contribute to the program’s outstanding chamber music series are selected.

The CAP Concert Series includes performances on Thursday evenings and “Informances” (lecture concerts) on Sunday afternoons. In 2008, the CAP appointed Frank Ezra Levy its first Composer in Residence. The brilliant Brazilian composer Liduino Pitombeira has been appointed 2009-2010 Composer-in-Residence. The Concert Artist Series and its new concert hall opening October 2009 are fostering President Dawood Farahi’s vision to make Kean University a regional artistic and cultural center.

Since the program’s inception, Kean’s Concert Artists individually have performed as soloists and chamber musicians here and abroad, recorded CDs, been nominated for several Grammys and Latin Grammys, performed on *Live from Lincoln Center and Kennedy Center* broadcasts, won glowing reviews (including 4½ stars from Down Beat Magazine), debuted at prestigious venues and received numerous awards, grants, and recognitions. In 2004, “Concert Artist” was recognized by Kean University as a distinct category of faculty.

Information about these wonderful musicians, about the Concert Artist Performance Series, and their two CDs-the crossover album, *The Great Kean Way: Concert Artists on Broadway* and *Schubertiana*-can be found at <http://www.Keanconcertartists.com>.

## Acknowledgements

We graciously thank President Dawood Farahi, Vice President Philip Connelly, Vice President Mark Lender, Dean Holly Logue, the Office of University Relations, the Office of Media and Publications, the Kean Foundation, the Department of Music, and all those who, with bold vision, provide continuing support of the Concert Artist Program and the School of Visual and Performing Arts. Special thanks to the American String Teacher's Association of New Jersey and the Zufall Foundation for their efforts in support of the ASTA/NJ Chamber Music Institute at Kean University.